

NOTICE

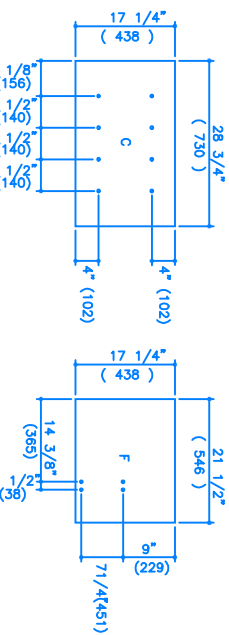
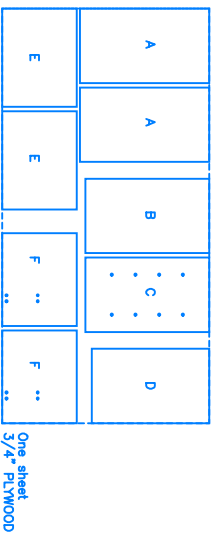
The purchaser agrees when purchasing this plan (the "Plan"):
 1) the purchaser has acquired the right to build or construct the project or project set out in the Plan for personal use only and not for any commercial use.
 2) reproduction of the Plan in whole or in part by any means whatsoever is strictly prohibited. The Headman of the project shall not be liable for any willful misuse or negligent use of this plan, the Project or any tools used to construct the Project or for any loss or damage resulting therefrom.

Note: Read all directions before beginning
 Carpenters Glue should be used to reinforce all joints
 Set all nails
 Dimensions in brackets denote millimeters

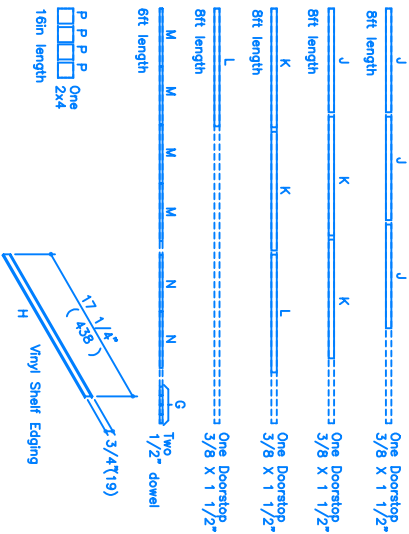
Directions

- 1) Lay out your material as outlined in the suggested materials layout (Fig 1) and the cutting diagram (Fig 2). Draw out all parts exactly as illustrated, including the letter designations, in pencil. Ensure to leave 1" between splices between cut lines to allow for the width of the glue. Before attaching the cut lines to allow for the width of the glue correct. Always cut on the waste side of the line. When cutting across the grain we recommend taping the edges of the cut with masking tape before cutting to prevent splitting.
- 2) Drill holes through pieces C and F as shown (Fig 3), with a 1/2" drill bit. Glue and nail F to E, leaving a 5/8" gap on the top and bottom, with 1" finishing nails, four along each side (Fig 4). Repeat for the other EF assembly, creating a "mirror image". Dip one end of each of the eight G pieces (1 1/2" lengths of 1/2" dowel) in glue and insert into the four holes in each F. These are fixed in position to allow D to slide back and forth, but not to come out once pieces L one attached. Run a bead of glue along the upper ledge of each of the EF assemblies, and place piece B in position. Nail through E and into B with 1" finishing nails, and nail to pieces C and F with 1" finishing nails. Place C, Cover C with nails, and nail to pieces E and F with 1" finishing nails. Place four casters on the unit, one per corner using 5/8" #8 screws, four per caster. Turn the unit upright again and attach the second piece A, as above. Ensure the assembly is square and set aside to dry. (Fig 8)

OVER

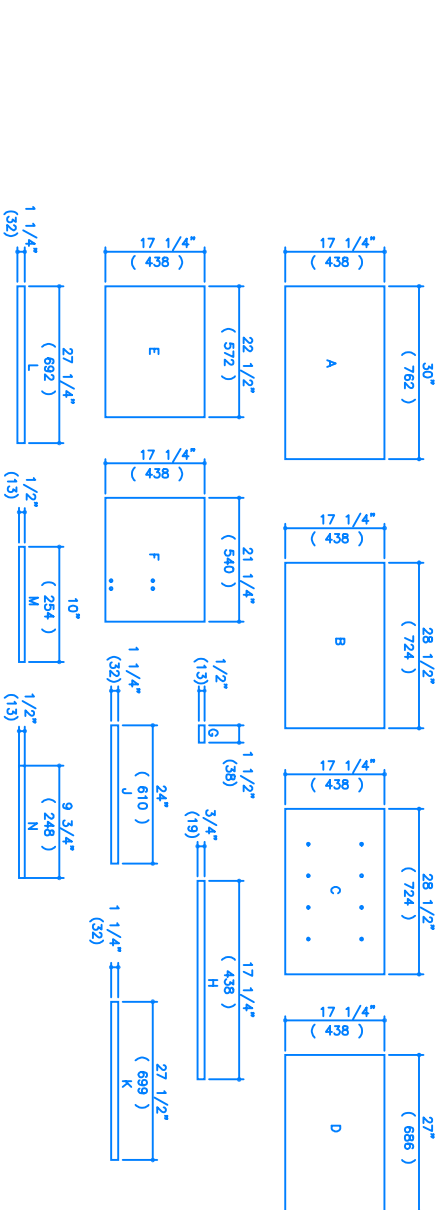


HOLE LOCATIONS
 FIGURE 3



SIDE ASSEMBLY
 FIGURE 4

MATERIALS LAYOUT FIGURE 1



CUTTING DIAGRAM
 FIGURE 2

MATERIALS LIST

- Approx. 1/2 lb. 1 1/2" finishing nails
- Approx. 1/2 lb. 1" finishing nails
- Approx. 1/2 lb. 2 1/2" nails
- Interior enamel paint
- One 4"x8" sheet 3/4" plywood
- Four 6" doortop (3/4"x1 1/4")
- Two 6" lengths 1/2" wood dowel or metal wire

MATERIALS LIST

- 3' of 3/4" vinyl shelf edging
- One 6" piece 2x3 (1/2"x1 1/2")
- Four casters & hardware
- Sandpaper
- Carpenters glue
- Panel adhesive or silicone
- Wood filler

TOOLS

- Hammer
- Table Saw
- Hand or 1/2" drill bit
- 1/16" 1/2" drill bit
- Pencil & measuring tape
- Screwdriver for caster hardware
- Hacksaw or finishing saw
- Putty knife and a Square